

HEATGUN

KHG2K
Heat Gun without Display
Temperature 2 Stroke
Low deg. C 50-550
High deg. C 50-650
Air Volume
Low 210-250 l/min
High 340-380 l/min
2000W,0.9kg



DRILL/GRINDER STANDS

KDRST10
Drill Stand
Suitable For Drill Machines having
Holding Collar 43 & 38 mm



BLOWERS

KBL500E
Blower
Manometer Water-600mm,
Air Volume-2.3m3/min,
500W,1.3kg



KBLW0V
Blower
Manometer Water-550mm,
Air Volume-2.3m3/min,
450W,1.1kg



KB650
Electric Blower
Manometer Water-750mm,
Air Volume-2.8m3/min.,
Air Pressure-5.5kPa
0-16000rpm, 650W, 1Kg



KCP180
Car Polisher
Pad Size-ø180mm,
600-3000rpm,1400W,3.5kg



CAR POLISHER

KCP180
Car Polisher
Pad Size-ø180mm,
600-3000rpm,1400W,3.5kg



BENCH GRINDER

KBG6
150mm Bench Grinder
ø150x20x12.7mm,
2950-3550rpm,300W,5.7kg



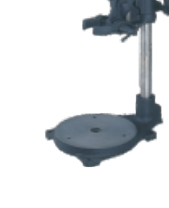
KAGST4
Grinder Stand
Suitable for 100, 115 &
125mm Angle Grinder



GD60
Drill Stand
Suitable for HD1115, KW8,
KW 10 Drills,28kg



GD70
Drill Stand
Suitable for GD25,
HD16 Drills,13.9kg



MAGNETIC DRILL STAND

KMS95RT
Magnetic Drill Stand
Suitable for HD1115,
KW8, KW 10 Drills
Magnetic Holding
Performance - 12000N,
Clamping Stud Threads -
1-1/16" x 14UNS
Maximum Stroke
(w /o Drill)-300mm,35.0kg



PAINT MIXERS

KPM6
Paint Mixer
M12,1000rpm,600W,3.2kg



KPM16
Paint Mixer
M14,180-380/300-650rpm,
1600W,6.0kg

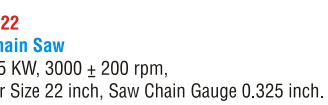


PETROL CHAIN SAWS

KPCS58-18
Petrol Chain Saw
58CC, 2.5 KW, 3000 ± 200 rpm,
Chain Bar Size 18 inch, Saw Chain Gauge 0.325 inch.



KPCS58-22
Petrol Chain Saw
58CC, 2.5 KW, 3000 ± 200 rpm,
Chain Bar Size 22 inch, Saw Chain Gauge 0.325 inch.



CONCRETE VIBRATORS

KCV9
35mm Concrete Vibrator
ø35mm,4100rpm,850W, Shaft Length-1.5m, 1.9kg



KCV3M
35mm Concrete Vibrator
Ø35, 4300rpm, 1200W, Shaft Length - 3.0m, 2kg



VACUUM CLEANER

KVC30
30L
Dry/Wet Vacuum Cleaner
30L, 1400W, 4.6kg



AGRICULTURAL SPRAYER

KAS16
Agricultural Sprayer
Capacity-16L,
Working Pressure-6bar
12V,14Ah, 6kg



COMPRESSORS

KCO30L
Compressor
Tank Capacity-30L,
Air Pressure-8bar
1450rpm, 850W, 19.1kg



KCO50L
Compressor
Tank Capacity-50L,
Air Pressure-8bar
2850rpm, 2000W, 25.4kg



BROACH CUTTERS

KBC38N
38mm Broach Cutter
Capacity - Ø12 to Ø38mm,
Cutter Depth-50mm,
Twist Drill - Ø1.5 to Ø13mm,
Spindle Holder - 19mm,
160mm Stroke, 200-750rpm,
1100W, 12KN,
165x85x50, 11.5Kg



KBC38
38mm Broach Cutter
Capacity - Ø12 to Ø38mm,
Cutter Depth - 50mm,
Twist Drill - Ø1.5 to Ø13mm,
Spindle Holder - 19mm,
165mm Stroke, 595rpm,
1200W, 13KN,
160x80x50, 13.5Kg.



KBC40
40mm Broach Cutter
Capacity - Ø12 to Ø40mm,
Cutter Depth - 50mm,
200-580 rpm,1200W,
12KN, 14Kg.



KBC40
40mm Broach Cutter
Capacity-Ø12 to Ø40mm,
Cutter Depth-50mm,
Twist Drill- Ø1.5 to Ø16mm,
Spindle Holder-19mm,
300mm Stroke, 650rpm,
1000W, 13KN, 17Kg.



KMS-BRC K1
Magnetic Drill Stand &
Drilling Machine
Core Drill Capacity- Ø62mm,
Capacity(MT3)-31max.
315mm Stroke,270rpm,
1100W,15KN,39Kg.



KBRC42
Magnetic
Drill Stand with
Drilling/Broaching
Machine
Capacity-Ø42mm,
340mm Stroke,
400rpm, 1100W,
11KN, 39Kg



KBC50
Ø50mm
Broach Cutter
Capacity- Ø50mm,
Cutter Depth-60mm,
300mm Stroke,
450rpm, 1100W,
15KN,30Kg.



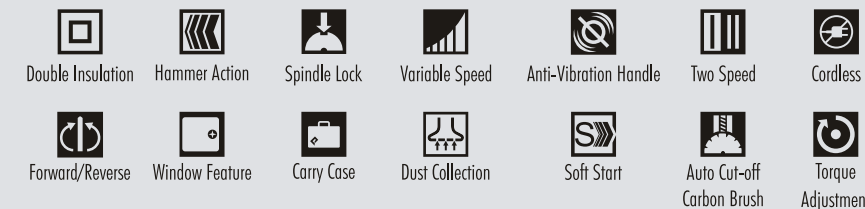
KBC40
40mm Broach Cutter
Capacity - Ø12 to Ø40mm,
Cutter Depth - 50mm,
200-580 rpm,1200W,
12KN, 14Kg.



KMS-BRC K1
Magnetic Drill Stand &
Drilling Machine
Core Drill Capacity- Ø62mm,
Capacity(MT3)-31max.
315mm Stroke,270rpm,
1100W,15KN,39Kg.



- ▶ RPM indicated is at no load. Parameters in catalogue are for 240 V AC, 50 Hz, 1 phase.
- ▶ The illustrations may show accessories and items of optional equipment which are not part of the standard specification.
- ▶ Colours may differ slightly from those shown, due to the limitations of the printing process.
- ▶ In the interest of continual improvement, KPT reserves the rights to alter design without prior notice.



CENTRAL MARKETING OFFICE
MUMBAI
309, Vasant Vihar Commercial Complex, Dr. C. Gidwani Road, Chembur, Mumbai - 400 074,
Tel.: 022 25213002/ 25202961, E mail: kptss.cmo@kpt.co.in

BRANCH OFFICES
PUNE
Flat No. 201, Runwal Shaarvari, Plot No. 19, S.No. 270/1/5, Opp. Bharat Petrol Pump, Next to Talwalkar Gym,
Baner Road, PUNE 411 045. Contact H.O. Tel.: 0231 2689900, E mail: kptss.pun@kpt.co.in

DELHI
A-11, Naraina Industrial Area, Phase -1, NEW DELHI 110 028. Tel.: 011 4554 8111, E mail: kptss.del@kpt.co.in

AHMEDABAD
"KAYCREST", 303, 41 Parimal Society, Nr. Parimal Garden, Ellisbridge, AHMEDABAD 380 006.
Contact H.O. Tel.: 0231 2689900, E mail: kptss.ahm@kpt.co.in

KOLKATA
1/1, Kimber Street, Ground Floor, Beniapur, Park Circus, KOLKATA 700 017.
Tel.: 033 2290 3157/3158, E mail: kptss.kol@kpt.co.in

HYDERABAD
Ground Floor, Plot No. 111, Nirmala Nilayam, Bhavana Enclave, Amar Jyothi Colony, New Bowenpally,
SECUNDERABAD 500 011. Tel.: 040 42408551, E mail: kptss.hyd@kpt.co.in

Besides the Catalogue Products, there are many other products available on request.
For this, please contact our nearest office or on mobile +91 92258 11539 / 92258 38930

Part No. 744395 / 01/04/2023

KPT Dealer

Manufactured & Marketed By:
KPT Industries Ltd.
Gat No. 320, Mouje Agar,
A/P & Taluka: Shirol 416 103,
Dist. Kolhapur, Maharashtra, INDIA.
Tel. : 0231 - 2689900
Fax : 0231 - 2689946
E mail : kpt.ho@kpt.co.in
CIN : L29130MH1976PLC019147

KPT POWER TOOLS
PRODUCT RANGE



GENERAL DUTY DRILLS

GD25 K2
13mm General Duty Drill
Al-ø16mm, W-ø25mm, S-ø13mm,
775rpm, 475W, 3.5kg



GD25N
13mm Pistol Drill
Al-ø16mm, W-ø25mm, S-ø13mm,
850rpm, 850W, 3.4kg



HEAVY DUTY DRILLS

HD16 K2
16mm Heavy Duty Drill
Al-ø20mm,
W-ø40mm, S-ø16mm,
800rpm, 650W, 3.7kg



HD16N
16mm Pistol Drill
Al-ø20mm,
W-ø40mm, S-ø16mm,
850rpm, 850W, 3.6kg



HD115MT K4
23mm Heavy Duty Drill
ø23mm, 500rpm,
1100W, 8.8kg



KW10 K3
31mm Heavy Duty Drill
ø31mm, 350rpm, 1100W, 9.3kg



ANGLE GRINDERS



P57-91 K5
180mm Angle Grinder
M14, Ø180mm, 8500rpm,
2000W, 6.9kg



P59-91 K5
230mm Angle Grinder
M14, Ø230mm, 6600rpm,
2000W, 7.1kg

STRAIGHT GRINDERS



HD1290 K3
100mm Straight Grinder
Ø100mm, 5800rpm, 1100W, 6.7kg



P77-91 LH K1
150mm Super Duty
Straight Grinder
Ø150mm, 6500rpm,
1800W, 7.6kg

BLOWER



KWB350 K1
Blower
Manometer Water-550mm,
Air Volume-1.7m³/min, 350W, 4.6kg

SANDER / POLISHER



HD1285 K4
180mm Heavy Duty
Sander / Polisher
M14, Ø180mm,
5200rpm, 1100W, 6.6kg

FLEXIBLE SHAFT GRINDER / SIREN



KF2 K1
Flexible Shaft
Grinder 2 Speed
Shaft Length-1360mm,
Collet-Ø6mm,
1st Gear (Milling) -1200rpm,
2nd Gear (Grinding) -12000 rpm,
370W, 7.0kg

INDUSTRIAL SIREN



KIS K6
Industrial siren
0-2Km, 370W, 1.7kg

SCREW DRIVER / IMPACT WRENCH



KSD10
10mm Electric Screw Driver
S-ø10mm, W-ø25mm,
350W, 0-750rpm, 1.0kg



KIW30C
Impact Wrench
Tool Holder 1/2", Torque 300Nm,
2600rpm, 450W, 2.2kg

IMPACT DRILL KIT



KDK13HN
13mm Impact Drill Kit
0-3000rpm, 0-48000bpm,
500W, 2.0kg

CORDLESS DRILLS



KDD12V
Cordless Drill
Ø10, 12V,
0-350/0-1300rpm,
1.3Ah Li-Ion, 0.9kg



KDD18V
Cordless Drill
Ø10, 18V,
0-350/0-1350 rpm,
1.5Ah Li-Ion, 1kg

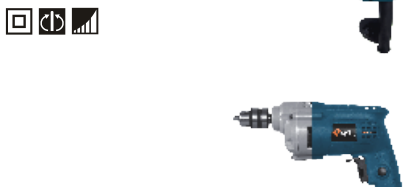
PLAIN DRILLS



KPD6
6mm Plain Drill
Al-ø10mm, W-ø15mm,
S-ø6mm, 2600rpm,
350W, 1.25kg



KPD6RE
6mm Plain Drill
Al-ø10mm, W-ø15mm,
S-ø6mm, 0-3500rpm,
350W, 1.1kg



KPD10RE
10mm Plain Drill
S-ø10mm, W-ø20mm, Al-ø13mm,
0-3000rpm, 600W, 1.3kg

IMPACT DRILLS

KID10
10mm Impact Drill
C-ø10mm, W-ø19mm, S-ø8mm,
0-2800rpm, 25700bpm, 500W, 1.7kg



KID13
13mm Impact Drill
C-ø13mm, W-ø25mm,
S-ø10mm, 0-2800rpm,
25700bpm, 600W, 1.8kg



KPT13H 1800
13mm Impact Drill
1800rpm, 600W, 1.6kg



KID13MB
13mm Impact Drill
C-ø13mm, W-ø25mm,
S-ø10mm, 0-1800rpm,
600W, 2.2kg



ROTARY HAMMERS



KPTRH22
22mm Rotary Hammer
0-900rpm, 2.2J,
800W, 2.4kg



KPTRH22N
22mm Rotary Hammer
0-1700rpm, 0-4800bpm, 2.2J,
900W, 2.8kg



KPTRH26
26mm Rotary Hammer
0-1300rpm, 2.6J,
950W, 2.9kg

DEMOLITION HAMMERS



KPT5DHN
5Kg Demolition Hammer
3700bpm, Tool Holder 17 mm Hex.,
900W, 6.3kg



KPT11DHN
11Kg Demolition Hammer
1000-2250bpm, 6-25J,
Tool Holder-SDS max., 1500W, 11.4kg



KPT16DHN
16Kg Demolition Hammer
1800bpm, 42J, 1400W, 14kg

MINI ANGLE GRINDERS



KAG6-100
100mm Angle Grinder
M10, Ø100mm,
11000rpm, 710W, 1.4kg



KAG750-100
100mm Angle Grinder
M10, Ø100mm, 11000rpm,
750W, 1.9kg



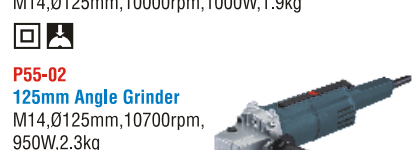
KAG8-100
100mm Angle Grinder
M10, Ø100mm, 11000rpm,
800W, 1.8kg



KAG900-4FRT
100mm Angle Grinder
M10, Ø100mm, 11000rpm
900W, 1.9kg



KAG10-4
100mm Angle Grinder
M10, Ø100mm, 10000rpm,
1000W, 1.8kg



KAG10-5
125mm Angle Grinder
M14, Ø125mm, 10000rpm, 1000W, 1.9kg



P55-02
125mm Angle Grinder
M14, Ø125mm, 10700rpm,
950W, 2.3kg



KAG14-5
125mm Angle Grinder
M14, Ø125mm, 11000rpm,
1400W, 3.2kg



KAG24-7
180mm Angle Grinder
M14, Ø180mm,
8500rpm,
2400W, 5.5kg



KAG24-9
230mm Angle Grinder
M14, Ø230mm,
6500rpm, 2400W,
5.6kg



KAG30-7
180mm
Angle Grinder
M14, Ø180mm,
8000rpm, 3000W,
5.5kg



KAG30-9
230mm
Angle Grinder
M14, Ø230mm,
6000rpm, 3000W, 5.7kg



KCS180
180mm Cut-Off Saw
ø180mm, 8000rpm,
1280W, 8.0kg



KPTCS355
355mm Cut-off-Saw
ø355mm, 3900rpm,
2300W, 17.1kg



KCS14L
355mm Cut-off-Saw
ø355mm, 3800rpm,
2300W, 15.4kg



KM4SBN
110mm Marble Cutter
ø110mm, 11000rpm,
1200W, 2.8kg



KC4
110mm Marble Cutter
ø110mm, 13000rpm,
1280W, 2.3kg



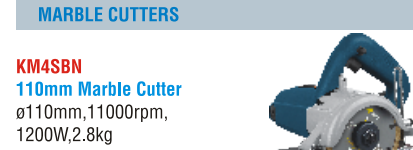
KK4
110mm Marble Cutter
Ø110, Max. Cutting Depth 34mm,
13000rpm, 1100W, 2.7kg



KPTTC5
125mm Marble Cutter
ø125mm, 13000rpm,
1400W, 3.1kg



KPTTC5FB
125mm Marble Cutter
Ø125mm,
Max. Cutting Depth-34mm,
13000rpm, 1400W, 3kg



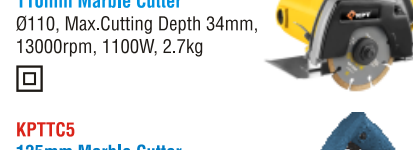
KSG4
100mm Straight Grinder
ø100mm, 5300rpm,
1250W, 3.9kg



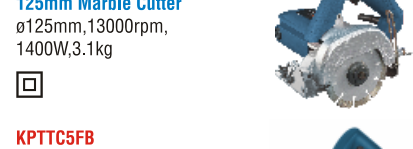
KPL82-1
Planer
Cutter Width-82mm,
Cutting Depth-1mm,
15000rpm, 570W, 2.5kg



KPL82MB
Planer
Cutting Width- 82mm,
Cutting Depth - 1mm
15000rpm, 650W, 2.6kg



KPTCS355
355mm Cut-off-Saw
ø355mm, 3900rpm,
2300W, 17.1kg



KPTCS355
355mm Cut-off-Saw
ø355mm, 3900rpm,
2300W, 17.1kg

CIRCULAR SAW

KCS190N
185mm Circular Saw
ø185mm, Cutting Depth-64mm,
5000rpm, 1400W, 4.5kg



DIE GRINDERS

KDG6N
6mm Die Grinder
Collet-ø6mm, 25000rpm,
500W, 1.8kg



KDG6S
6mm Die Grinder
Collet-ø6mm, 27000rpm,
350W, 1.2kg



STRAIGHT GRINDER



KSG4
100mm Straight Grinder
ø100mm, 5300rpm,
1250W, 3.9kg

PLANERS



KPL82-1
Planer
Cutter Width-82mm,
Cutting Depth-1mm,
15000rpm, 570W, 2.5kg



KPL82MB
Planer
Cutting Width- 82mm,
Cutting Depth - 1mm
15000rpm, 650W, 2.6kg

SANDER / POLISHER



KP10
Polisher
1400rpm, 600W, 1.8kg

KOSN
Orbital Sander
Sanding Pad
Size -110 x 210mm,
7200rpm, 200W, 4.2kg



KOS180
Orbital Sander
Pad Size-92 x 187mm,
12000rpm, 180W, 1.5kg



KROS125
Random Orbital Sander
Pad Size-ø125mm,
Dia. of Orbit-1.9mm,
6000-13000rpm, 450W, 2.1kg



JIG SAW

KJS650
Jig Saw Light Duty
S-ø6mm, W-ø65mm,
800-3000rpm, 650W, 1.8kg



ROUTER / TRIMMER

KRT12
Router
22000rpm, 1200W,
4.2kg



KTR6
6/8.35mm Trimmer
Trim Dia. Ø6/6.35, 30000rpm
600W, 1.4kg



PRESSURE WASHERS

KPW1400
130 Bar
Pressure Washer
130bar,
Working Pressure-90bar
Flow Capacity-390Ltr./Hr.,
1600W, 8.4kg



KPW1400N
140 Bar
Pressure Washer
140bar,
Working Pressure-90bar,
Flow Capacity-390Ltr./Hr.,
1800W, 8.5kg

